



## Belmont Terrace, London, W4 5UG

A generously proportioned, contemporary apartment ideally situated in the heart of Chiswick, moments from a wide range of local amenities. The property is set within an exclusive boutique development of just 15 apartments and is located on the first floor, with lift access. The apartment is presented in immaculate condition throughout and offers a bright, spacious reception area with a fully integrated open-plan kitchen. The principal bedroom benefits from a luxury tiled en-suite shower room, complemented by a second double bedroom and a stylish, fully tiled family bathroom. Additional features include extensive built-in storage, underfloor heating, video entry system and automatic lift access. Exceptionally well located, the flat is just a two-minute walk from the shops, cafés and restaurants of Chiswick High Road, with excellent transport links via Chiswick Park and Turnham Green Underground stations nearby. Hounslow Council Tax Band F. EPC rating B. Offered furnished and available early 6th April

- Lovely central location in the heart of Chiswick
- Two bed/two baths
- Spacious reception with open plan fully fitted kitchen
- Exceptionally maintained throughout
- Underfloor heating
- Luxury tiled family bathroom and additional en-suite
- Offered furnished
- Available early April

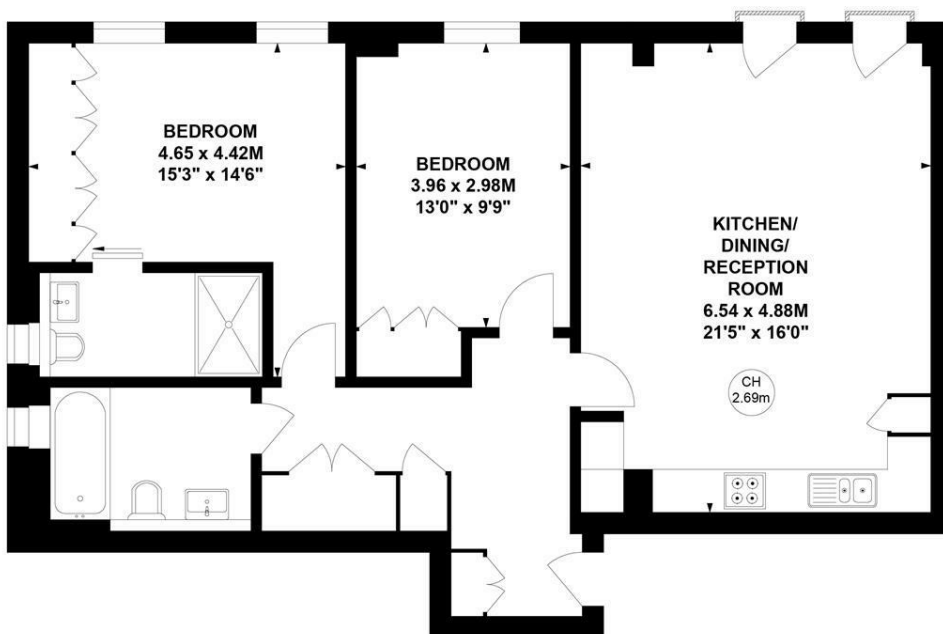
**£2,950 Per Calendar Month**



# Merlin House, W4

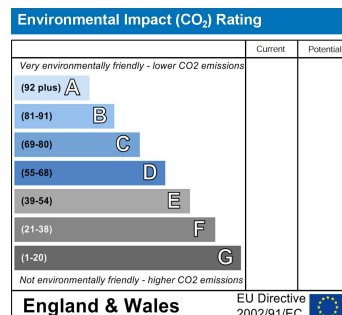
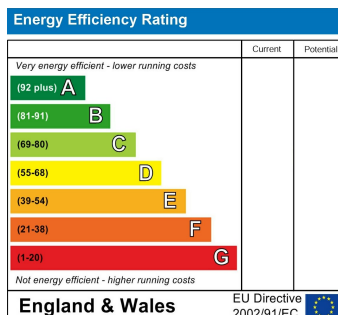
Approximate Gross Internal Area  
86.45 sq m / 930 sq ft

Key :  
CH - Ceiling Height



## First Floor

Not to scale, for guidance only and must not be relied upon as a statement of fact.  
All measurements and areas are approximate only



5-7 Turnham Green Terrace, Chiswick, London, W4 1RG

Tel 020 8747 8800

E-mail [lettings@whitmanandco.com](mailto:lettings@whitmanandco.com)

Website [www.whitmanandco.com](http://www.whitmanandco.com)

[PrimeLocation.com](http://PrimeLocation.com)

[Zoopla.co.uk](http://Zoopla.co.uk)

[rightmove](http://rightmove.com)

[OnTheMarket.com](http://OnTheMarket.com)

MISREPRESENTATION ACT 1967

Whitman & Co. for themselves and for the vendors give notice that these particulars do not constitute any part of, an offer of contract. All statements contained in these particulars are made without responsibility on the part of Whitman & Co. or the vendor. None of the statements contained in these particulars is to be relied upon as statements or representations of facts. Any intending purchaser must satisfy himself by inspection or otherwise as to the correctness of each of the statements contained in these particulars. The vendor does not make or give, and neither Whitman & Co. or any person in their employment has any authority to make or give, any representation or warranty whatever in relation to the property.